

ENIXE 400

SERVE-OVER BAIN-MARIE COUNTER



FEATURES INCLUDE:

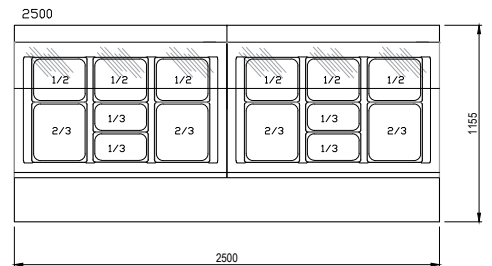
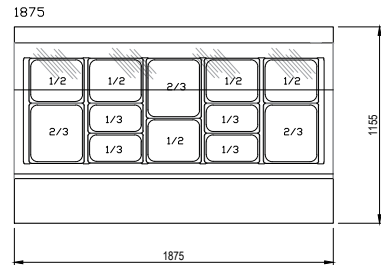
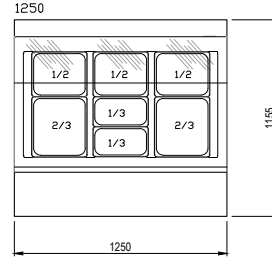
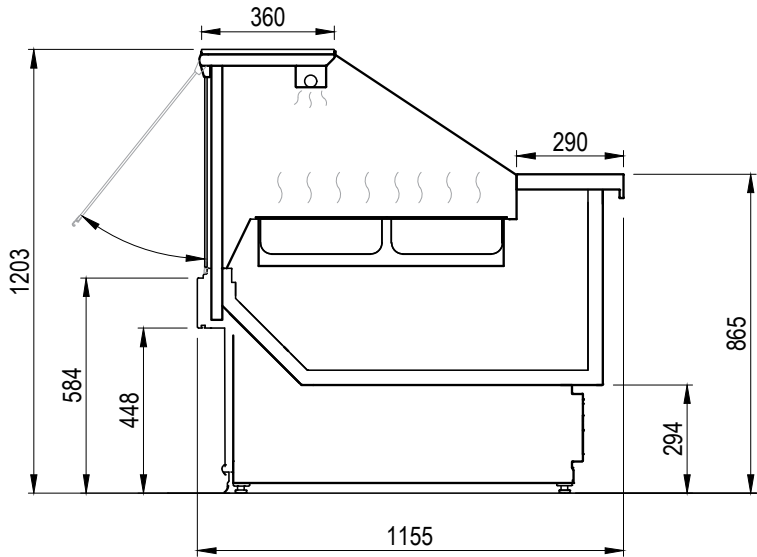
Flat lift up glass
Stainless steel internal bain-marie
Overhead heat lamps

Rear perspex slides
Castor wheels (optional)

ENIXE 400

SERVE-OVER BAIN-MARIE COUNTER

CRIO CABIN
TASTE PRESENTATION



ENIXE 400	1250	1875	2500
* Operating Temp (°C)	+65	+65	+65
Refrigeration	Ventilated/R404a		
Power Supply	400V/3Ph/15 Amp hard wired		400V/3Ph/20 Amp plug hard wired
Operating Current (Amp)	8.5	13.7	17.0
Nominal Power (W)	3400	5500	6800
Energy Consumption (kWh/24h)	61	99	122
Display Surface (m ²)	1.00	1.50	2.00
Length (mm) with endwall	1330	1955	2580
Endwall thickness (mm)	40	40	40
Height w/o castors (mm)	1200	1200	1200
Height incl. castors (mm)	1286	1286	1286
Depth w/o bumpers (mm)	1160	1160	1160
Depth w bumpers (mm)	1222	1222	1222
Weight w/o packaging (kg)	160	210	310

* Climate class 3 (25°C, 60%R/H)

** Ex factory item