

Topaz Cake & Food display

self contained



Digital controller



Adjustable shelves



Double glazed,
heated glass



Hairline edge 45° cut glass



10 Amp power

Topaz Cake And Food display cabinets are perfectly suited to the fast-growing café market and for those with a tighter budget.

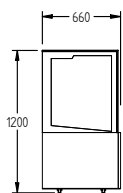
Cabinets are available in four widths from 900mm to 1800mm in two different heights. The standard height of the units is 1200mm with two adjustable shelves and base, while the high units are 1380mm with three adjustable shelves and base.

These units feature heated glass on the front, top and sides to minimise condensation and the adjustable shelves feature energy efficient and long life LED lighting.

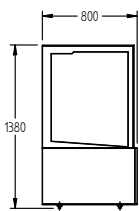


Advantages

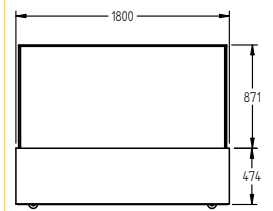
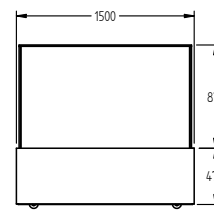
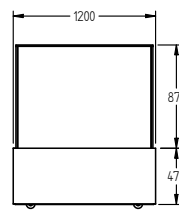
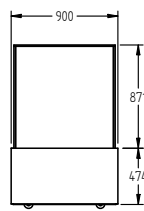
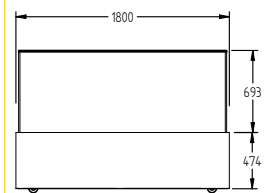
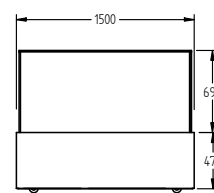
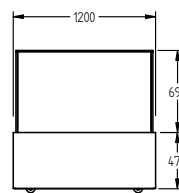
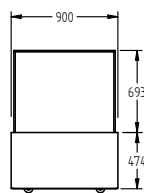
- Designed for 32°C/65% ambient operating environment
- Adjustable electronic controller with two digital temperature displays
- High efficiency, long life LED strip lighting under each shelf and glass top
- Ventilation at rear of cabinet
- Auto defrost utilising waste heat recovery vaporiser
- Easy to clean condenser with a removable rear vent
- Double glazed heated glass panels on front, top and both sides
- Two adjustable shelves (flat and angle positions) plus base for the HTCF models (three for HTCFH models)
- One piece metal shelves for added strength (2 pieces/level for 1800mm displays)
- Sliding Argon E rear sliding doors
- Packed for shipping in a crate (forklift required)
- Supplied on castors



HTCF



HTCFH



MODEL		900 MM	1200 MM	1500 MM	1800 MM
HTCF (Refrigerator +1°/+4°C)	Standard version	HTCF9	HTCF12	HTCF15	HTCF18
HTCFH (Refrigerator +1°/+4°C)	High version	HTCFH9	HTCFH12	HTCFH15	HTCFH18

SPECIFICATIONS

**DIMENSIONS - W X D X H (HTCF)
(ON CASTORS) MM** 900 W x 660 D x 1200 H 1200 W x 660 D x 1200 H 1500 W x 660 D x 1200 H 1800 W x 660 D x 1200 H

**DIMENSIONS - W X D X H (HTCFH)
(ON CASTORS) MM** 900 W x 800 D x 1380 H 1200 W x 800 D x 1380 H 1500 W x 800 D x 1380 H 1800 W x 800 D x 1380 H

WEIGHT UNPACKED (KG) 220 250 300 320

DOOR TYPE Standard: **SL** (Sliding rear doors)

FINISH **SS** (Stainless Steel exterior)

SHELVES (INCLUDING BASE) HTCF VERSION 3 3 3 3

SHELVES (INCLUDING BASE) HTCFH VERSION 4 4 4 4

ELECTRICAL

POWER SUPPLY 10 amp 10 amp 10 amp 10 amp

HTC MODELS **RUNNING AMPS** 3.0 3.4 3.8 4.6

HTCH MODELS **RUNNING AMPS** 4.5 5.0 7.0 7.5

GAS TYPE

REFRIGERANT (HTCF VERSION) **FRIDGE MODELS** R134a R134a R134a R134a

REFRIGERANT (HTCFH VERSION) **FRIDGE MODELS** R134a R134a R404a R404a